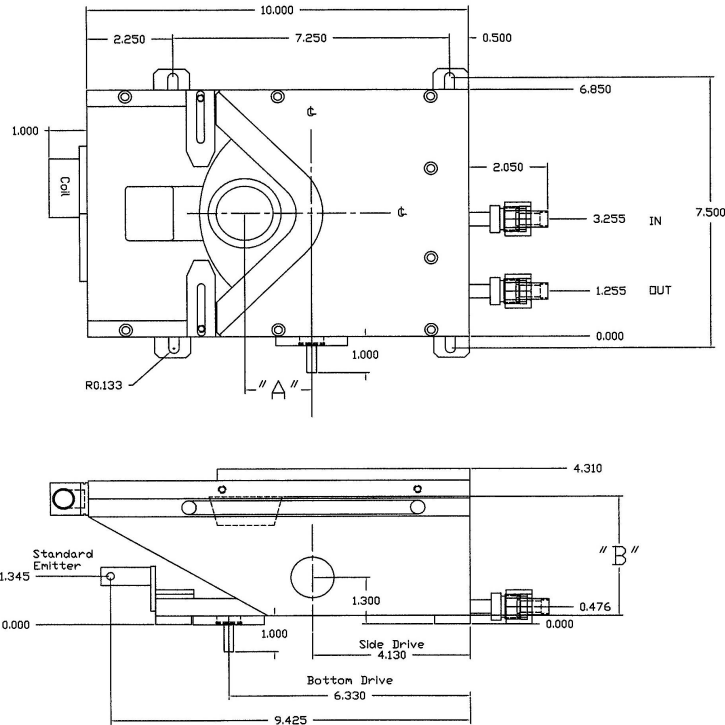


EBM-10 Specifications

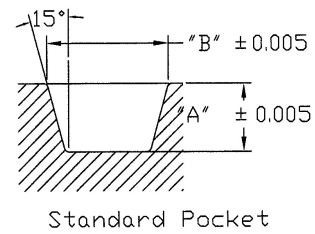
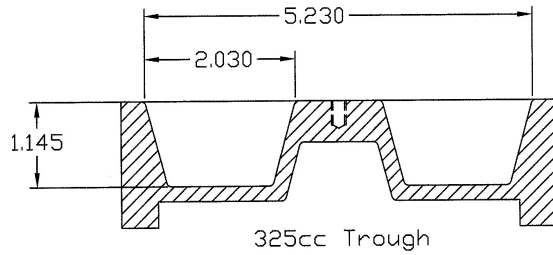
<u>Electron Beam Deflection:</u>	<u>270°</u>
<u>Power Rating:</u>	<u>10kW</u>
<u>Maximum High Voltage:</u>	<u>10kV</u>
<u>High Voltage Range:</u>	<u>5kV to 10kV</u>
<u>Lateral Coil Resistance:</u>	<u>3.0 Ohm</u>
<u>Sweep, Lateral Coil:</u>	<u>+/- 1 Amp</u>
<u>Longitudinal Coil Resistance:</u>	<u>9.5 Ohm</u>
<u>Sweep Longitudinal Coil :</u>	<u>+/- 1 Amp</u>
<u>Emission Current:</u>	<u>up to 1 Amp@10kV</u>
<u>Filament Power:</u>	<u>600 Watts Maximum</u>
<u>Water Requirements:</u> <i>Impute water temperature should be 60° F (15° C) @ 60 psi (4.2 kg/cm) with 3/8" (10mm) lines.</i>	<u>3 gpm @ 10kW</u>
<u>Weight:</u> <i>As delivered, less shipping carton</i>	<u>46 lbs. (20.81 kg)</u>
<u>Dimensions:</u> <i>Note: dimensions less drive protrusions</i>	<u>4.310"H x 8.060"W x 13.050"L</u> <u>10.947 cm H x 20.472 cm W x 33.147 cm L</u>
<u>Maximum Crucible Volume:</u>	<u>4 x 40cc or 325cc Trough</u>

EBM-10 Reference Dimensions



<u># of Pockets</u>	<u>Size</u>		<u>"A"</u>	<u>"B"</u>
<u>4</u>	<u>7,15,25,30 cc</u>	<i>with web</i>	<u>1.750"</u>	<u>3.550"</u>
<u>4</u>	<u>30,40 cc</u>	<i>without web</i>	<u>1.750"</u>	<u>3.750"</u>
<u>4</u>	<u>40 cc</u>	<i>with web</i>	<u>1.800"</u>	<u>3.800"</u>
<u>6</u>	<u>7,15 cc</u>	<i>with web</i>	<u>1.930"</u>	<u>3.550"</u>
<u>6</u>	<u>25 cc</u>	<i>with web</i>	<u>1.930"</u>	<u>3.675"</u>
<u>1</u>	<u>235 cc</u>	<i>trough</i>	<u>1.750</u>	<u>3.550"</u>
<u>1</u>	<u>325 cc</u>	<i>trough</i>	<u>1.800"</u>	<u>3.800"</u>

Crucible Dimensions



Size	Pockets	"A"	"B"	Part Number
7cc	4	.500	1.125	11210-407
	6			11210-607
15cc	4	.670	1.485	11210-415
	6			11210-615
25cc	4	.680	1.855	11210-425
25cc	6	.920	1.633	11210-625
30cc w/web	4	.790	1.920	11210-430 w/web
30cc w/o web	4	.940	1.800	11210-430 w/o web
40cc w/web	4	1.020	2.030	11210-440 w/web
40cc w/o/web	4	1.020	2.030	11210-440 w/o web
235cc	Trough	.820	1.925	11210-235 trough
325cc	Trough	1.145	2.030	11210-325 trough